

Review

Cite

Balbaisi A, Stiban J (2022) Barth Syndrome: A Genetic Ailment with a Lipid Component and Bioenergetic Ramifications. MitoFit Preprints 2022.3. <https://doi.org/10.26124/mitofit:2022-0003>

Received 2022-03-07

Accepted 2022-03-09

Online 2022-03-10

Author contributions

AB did the literature survey and wrote the manuscript. JS reviewed and edited the manuscript and wrote parts of it. JS prepared the figures.


Conflicts of interest

No conflicts declared.

Keywords

Barth syndrome, tafazzin, cardiolipin, cardiolipin remodeling, 3-MGA, respiratory complexes

Barth Syndrome: A Genetic Ailment with a Lipid Component and Bioenergetic Ramifications

Abdallah Balbaisi^{1#},  Johnny Stiban^{1*}

¹ Department of Biology and Biochemistry, Birzeit University, Palestine

Present address: Friends School, Ramallah, Palestine

* Corresponding author: jstiban@birzeit.edu

Abstract

In eukaryotes membranes are structural components that are necessary for compartmentalization of function. Membranes consist of a lipid bilayer with a multitude of proteins on or in this sandwich. Nevertheless, membranes are not solely structural in function but also, they serve as basis for cellular signaling and metabolism. Membranes vary with respect to their lipid composition, protein:lipid ratio, thickness, carbohydrate content, etc., and hence their functions are not necessarily identical in the different compartments. In the mitochondrial inner membrane (mtIM), as in its bacterial ancestor, a special phospholipid is present. Cardiolipin (CL) is a phospholipid consisting of four hydrophobic tails. It is essential for the assembly of the electron transfer system (ETS) and its components, and hence CL is required for efficient mitochondrial bioenergetics. Mutations in CL remodeling enzyme encoded by the tafazzin gene (*TAZ*) are associated with a syndrome first identified by Dutch scientist Peter Barth, hence the name Barth Syndrome. Here, we review recent research on this devastating syndrome focusing on CL biosynthesis and remodeling and relationship between the phospholipid component and mitochondrial bioenergetics. We further by exploring management and possible future techniques in the treatment of this syndrome.

1. Definition

Barth syndrome (BTHS) is a rare X-linked inherited disease that mainly affects males. It is caused by different mutations in the taffazin (*TAZ*) gene (Figure 1) [1]. BTHS was first described in 1983 by Dr. Peter Barth, a pediatric neurologist, who noticed a high infant mortality rate among males in a large pedigree of a family in his native the Netherlands. The deaths were linked to heart failure or sepsis [2]. The condition showed an X-linked recessive inheritance pattern, and was primarily characterized by dilated cardiomyopathy, skeletal myopathy, and neutropenia [2-4]. Barth was interested in pursuing the underlying cause of this disease and he observed abnormalities in the electron transfer system (ETS) in a patient's sample [2]. This was consistent with a previous discovery of an X-linked case of cardiomyopathy by Neustein in 1979, who also noticed mitochondrial abnormalities [5]. In 1991, Richard Kelley illustrated that organic aciduria, especially 3-methylglutaconic aciduria, is another feature found in individuals with this syndrome [3]. The prevalence of BTHS has been estimated to be 1 in 300 000–400 000 births. However, recent studies approximate the incidence to be around 1 case per million males. BTHS manifests mainly in infancy, as 90 % of patients with BTHS show symptoms of cardiomyopathy and neutropenia at less than 1 year old. The diagnosis of BTHS can be challenging, as 50 % of individuals are diagnosed after 1 year of age [6].

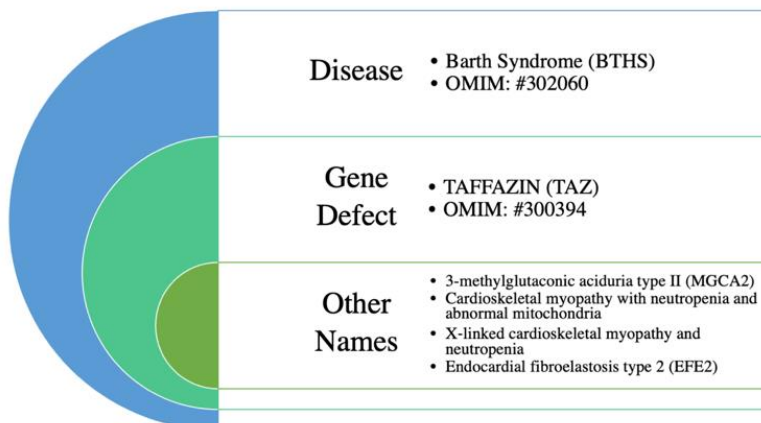


Figure 1. The disease card. Barth syndrome (BTHS) and its other used names, defective gene and Online Mendelian Inheritance in Man (OMIM) identification numbers.

2. Etiology

The primary cause of Barth Syndrome is a genetic mutation in the *TAZ* gene, which is located in the long *q* arm of chromosome X, most specifically in the Xq28 region [7, 8]. The *TAZ* gene spans 11 kbp and consists of 11 exons with a highly conserved sequence; the first two exons are non-coding [1, 7]. Over 160 mutations have been detected and identified in all different exons of the *TAZ* gene [9]. The majority of these are missense mutations and small insertion-deletion mutations. However, a small fraction of patients exhibited large exon deletions, and even in one case, a whole gene deletion was reported [4, 8].

Barth Syndrome follows an X-linked recessive inheritance pattern. According to the Barth Syndrome Foundation and data collected by the human *TAZ* gene mutation and variation database [10], roughly 13 % of males carry *de novo* mutations, which were not

identified in the maternal DNA of somatic cells [4]. However, gonadal mosaicism has been recorded, which raises the likelihood that unaffected mothers who do not carry any mutations in the TAZ gene in their somatic DNA would pass the mutation through gametes that contain a defective gene. It is still possible for females to show symptoms of BTHS [4, 8]. This was recorded in a female who had two different defective genes, the first had a large deletion of exons 1-5, and the second was a ring form with a large deletion of the long arm that included the Xq28 region of the chromosome. Skewed X-inactivation can cause females to show symptoms of BTHS with a variation in severity [4]. It has been suggested that a post-inactivation selection mechanism might happen causing ETS abnormalities or other damaging effects in different cell types [4, 8].

TAZ gene encodes for Tafazzin protein which is a phospholipid acyltransferase [11] required for the remodeling of cardiolipin (CL) [12]. CL, or diphosphatidylglycerol is a dimeric phospholipid (Figure 2) that is highly abundant in the mitochondrial inner membrane (mtIM) [13]. In fact, CL is the only phospholipid specific to mitochondria, making up about 15–20 % of the total phospholipids in the mtIM [13]. It assumes essential roles in the structure,

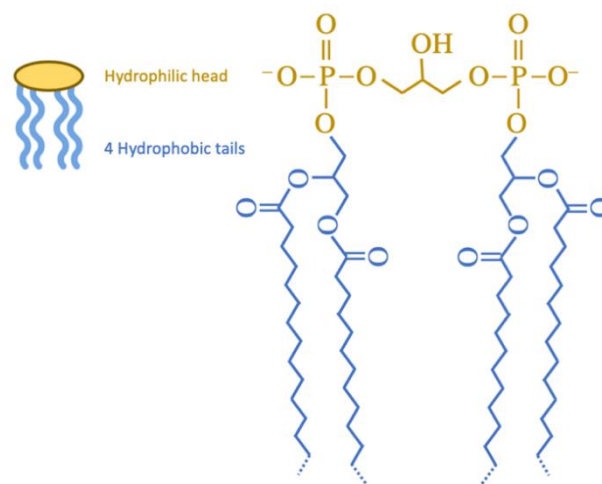


Figure 2. Structure of CL. A cartoon (left) and molecular (right) structures of CL show a wide hydrophilic head composed of two phosphates and four hydrophobic tails with varying chain lengths (dotted bonds). The structure is effectively a diphosphatidylglycerol.

function and physiology of mitochondria. It is implicated in mitochondrial dynamics [14–16], autophagy [17], mitophagy [18], apoptosis [19], mitochondrial DNA replication [20] and mitochondrial bioenergetics and metabolism [21–23]. Moreover, CL is required for cristae organization and biogenesis [24], as well as for lipid-protein interaction particularly with proteins involved in oxidative phosphorylation such as respiratory Complexes I, III, IV, and ATP synthase [25].

2.1. Properties and biosynthesis of CL

CL is a double phosphatide linked to a glycerol moiety (Figure 2). Depending on the cell and tissue types, CL may contain several acyl chain configurations [6]. For instance, CL with four linoleoyl species (L₄-CL or tetra linoleoyl CL) is normally abundant in highly oxidative tissues such as cardiac and skeletal muscles accounting for up to 70–80 % of total CL [4].

The biosynthesis of CL (Figure 3) is exclusively located to the mitochondria without the involvement of the endoplasmic reticulum. This multistep synthesis starts in

the mtIM after the import of phosphatidic acid (PA) from the endoplasmic reticulum. The enzymatic activation of PA produces cytidine diphosphate-diacylglycerol (CDP-DAG), in a reaction catalyzed by CDP-DAG synthase (CDS). CDP-DAG is then converted to phosphatidylglycerol phosphate (PGP) by condensing with glycerol 3-phosphate (Gp). This step, which is catalyzed by PGP synthase (PGPS), is the committed step in synthesizing CL. Phosphatidylglycerol phosphate phosphatase (PGPP) then dephosphorylates PGP producing phosphatidylglycerol (PG), which ultimately condenses with another CDP-DAG molecule via CL synthase (CLS), a protein found in the inner leaflet of the mtIM facing the matrix, generating nascent (premature) CL [26, 27].

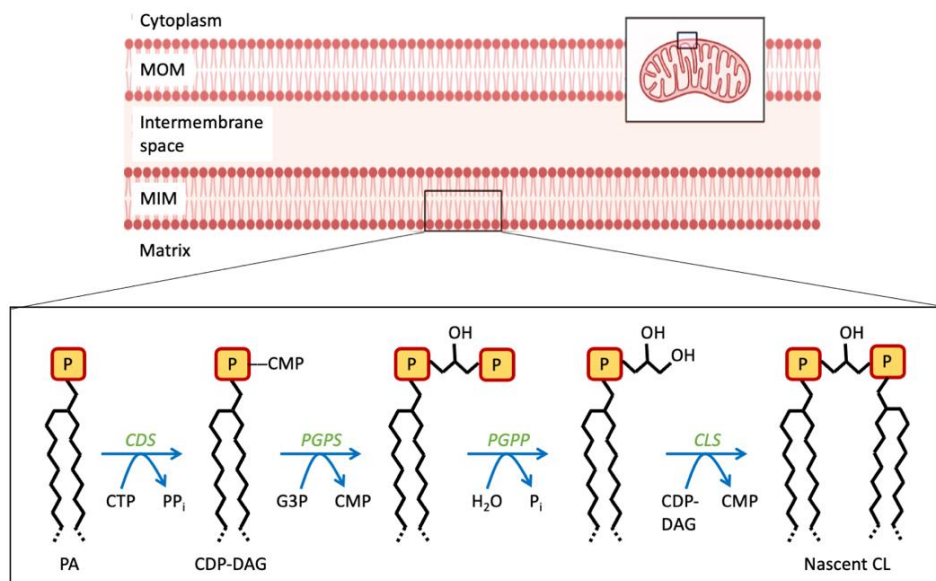


Figure 3. De novo biosynthesis of CL. The pathway of CL generation occurs in the mitochondrial inner membrane facing the mitochondrial matrix where a sequence of four enzymes converts phosphatidic acid to nascent CL molecule. Note that the tails of CL are arbitrary and do not reflect the actual length of the acyl chains which vary. CDS, CDP-DAG synthase; CLS, CL synthase; CMP, cytidine monophosphate; Gp (G3P in figure), glycerol 3-phosphate; PGPP, phosphatidylglycerol phosphate phosphatase; PGPS, phosphatidylglycerol phosphate synthase; P_i , inorganic phosphate; mtIM (MIM in figure), mitochondrial inner membrane; mtOM (MOM in figure), mitochondrial outer membrane.

Nascent cardiolipin is then remodeled by exchanging its fatty acyl moieties (Figure 4). Remodeling (Figure 4) starts by the deacylation of one acyl group by several phospholipases of the PLA_2 family [28, 29] producing monolysocardiolipin (MLCL). Tafazzin is a coenzyme A-independent acyltransferase that reacylates MLCL to form the mature CL molecule [30, 31]. It is noteworthy that Tafazzin is not the only CL remodeling enzyme as other coenzyme A-dependent acyltransferases can also acylate MLCL [32]. Disruption in remodeling cardiolipin would result in transforming MLCL into dilyocardiolipin (DLCL) by PLA_2 followed by the degradation of CL [26]. Mutations in the *TAF* gene results in a reduction in the formation of mature forms of CL such as L_4 -CL and an increase in the intermediate species with different acyl compositions (MLCL) [33]. This disrupts and increases the ratio of MLCL to L_4 -CL [4, 8]. In fact, analysis of L_4 -CL content

in fibroblasts is a specific biochemical approach to detect this disorder [6]. In BTHS, MLCL accumulates due to impaired Tafazzin activity, which leads to abnormal mitochondrial structure with inefficient oxidative phosphorylation [22, 34-36].

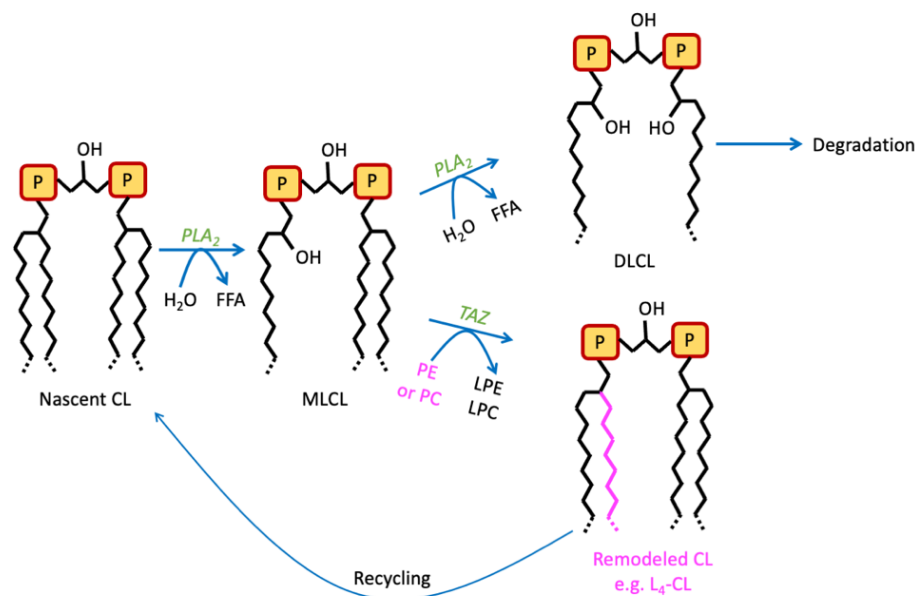


Figure 4. Remodeling of CL. CL is remodeled by the removal of its fatty acyl chains by phospholipase 2A and reinsertion of new fatty acyl moieties by different enzymes including tafazzin, to produce L₄-CL. Lyso-CL that is generated after the action of PLA₂ and left unremodeled is later degraded. Note that the tails of CL are arbitrary and do not reflect the actual length of the acyl chains which vary. FFA, free fatty acid; L₄-CL or tetra linoleoyl CL; LPC, lysophosphatidylcholine; LPE, lysophosphatidylethanolamine; MLCL, monolyso-CL; PLA₂, phospholipase A₂.

2.2. CL and bioenergetics

Respiratory complexes reside in the mtIM and carry electrons from NADH or succinate ultimately to molecular oxygen, while pumping protons in the process. Reentry of protons down their concentration gradient results in a concomitant generation of ATP via ATP synthase. CL is both highly acidic and hydrophobic enabling it to interact favorably with the respiratory complexes embedded in the mtIM. Such an interaction is required for the optimal function of these proteins [37-39]. CL has been shown to interact with all components of the ETS. Indeed, specific binding sites for CL were observed in Complexes I, III and IV, which are required for the electron transfer from NADH [40-42]. Other *in vitro* studies have demonstrated strict dependence of respiratory Complex IV and ATP synthase on CL [43, 44]. Multiple molecules of CL were present in Complexes III and IV and the removal of these molecules led to the dissociation of the subunits and the loss of activity, indicating an essential role of CL in maintenance of structure and function of respiratory complexes [40]. Using molecular dynamics simulation and resolving of the crystal structure, CL was shown to spontaneously locate near the catalytic site of Complex III [45]. CL is found buried in the crevices of integral membrane proteins of the ETS, between the transmembrane helices [42]. Depending on the complex one or more CL

molecules associate with it (Table 1). Those CL molecules are thought to glue complexes together and are required for their full functioning, including proton translocation [40, 41].

In vivo, respiratory complexes are rarely present as represented in biochemistry books, as individual entities; they are organized into supercomplexes termed respirasomes [46-51]. There are multiple conformations and compositions of respirasomes depending on the origin of mitochondria among other things [51, 52]. Respirasomes are thought to increase substrate channeling and increase efficiency of electron transfer. CL has been found to be instrumental in the formation and proper functioning of these supercomplexes [38, 53-55]. The tight binding of CL to Complex IV is important for the formation of Complex III and Complex IV tetramers [54]. Moreover, CL was demonstrated to be involved in the supramolecular organization of ATP synthase, carnitine palmitoyl-transferase, creatine phosphokinase, and other mtIM proteins [26, 56]. CL is therefore essential for the assembly of higher order mitochondrial complexes and supercomplexes. Mitochondria bioenergetics thus depend strongly on CL [40, 45, 57]. Mutations in the *TAZ* gene can result in decreased mitochondrial enzymatic activity, especially the respiration rate, lowering the optimum ATP production. This decrease in ATP synthesis is counteracted and compensated by increased mitochondrial content [19] and hypertrophic cardiomyopathy [58].

Table 1. CL molecules in the solved crystal or cryo-EM structures of the respiratory complexes.

Complex	Species	CL molecules	Refs.
<i>I (NADH dehydrogenase)</i>	<i>Ovine heart</i>	4	[59]
<i>II (succinate dehydrogenase)</i>	<i>E. coli</i>	1	[60]
<i>III (cytochrome c oxidoreductase)</i>	<i>S. cerevisiae</i>	1	[41, 61]
<i>IV (cytochrome c oxidase)</i>	<i>Bovine heart</i>	2	[62]

3. Clinical Manifestations

Table 2. Clinical manifestations of Barth syndrome [4].

<i>Systems</i>	<i>Major (Signs/Symptoms)</i>	<i>Minor (Signs/Symptoms)</i>
Cardiovascular	<ul style="list-style-type: none"> • Dilated Cardiomyopathy • Left Ventricular Non-Compaction • Prolonged corrected QT interval 	<ul style="list-style-type: none"> • Endocardial Fibroelastosis • Ventricular arrhythmia/Sudden cardiac death • Undulating Cardiomyopathy • Hypertrophic Cardiomyopathy (rarely)
Hematological & Infectious	<ul style="list-style-type: none"> • Neutropenia • Recurrent aphthous ulcers & sore gums • Perianal dermatitis 	<ul style="list-style-type: none"> • Recurrent bacterial infections • Septicemia
Neuromuscular	<ul style="list-style-type: none"> • Delayed motor milestones • Exercise intolerance • Abnormal fatigability • Proximal myopathy 	
Neurological	<ul style="list-style-type: none"> • Mild learning disabilities • Attention deficits 	<ul style="list-style-type: none"> • Strokes (cardiac embolism)
Endocrine and Metabolic	<ul style="list-style-type: none"> • 3-methylglutaconic aciduria • Constitutional bone delay with delayed bone age • delayed puberty 	<ul style="list-style-type: none"> • Hypercholesterolemia • Hypoglycemia • Lactic acidosis (often accompanies cardiac failure) • Osteopenia
Dysmorphic features	<ul style="list-style-type: none"> • Deep-set eyes • Large ears (older boys) • Full cheeks 	

4. Diagnosis

The clinical diagnosis of BTHS had been based on the triad of neutropenia, cardiomyopathy, and high levels of 3-methylglutaconic acid (3-MGA) in urine and plasma. Cardiomyopathy is present in approximately 70 % of patients with BTHS, and many BTHS patients have a 5- to 20-fold increase in 3-MGA levels. However, some BTHS patients with cardiomyopathy were not diagnosed with BTHS even though they exhibited other clinical manifestations such as muscle weakness and growth delay, because these patients had normal 3-MGA levels in urine. Therefore, measuring 3-MGA as a tool for diagnosing BTHS is insufficient.

Measurement of the ration of MLCL to CL ratio in dried blood spot specimens is a better tool for the diagnosis of BTHS. It is critical to measure the ratio because many BTHS patients have normal levels of CL but an elevated MLCL:CL ratio. Thus, measuring the MLCL:CL ratio is considered a sensitive and 100 % specific test for the diagnosis of BTHS.

Once elevated MLCL:CL ratio has been detected, sequencing the *TAZ* gene and detecting any mutations is considered as a final confirmatory test for the diagnosis of BTHS [36].

5. Disease Management

Many BTHS patients show responsiveness to drugs that are usually used to manage standard heart failure, including beta blockers, angiotensin converting enzyme inhibitors, digoxin and diuretics [63]. It is recommended to observe BTHS patients for any signs of ventricular arrhythmia or other symptoms such as syncope. Such findings would require additional testing and the placement of an implantable cardioverter-defibrillator should be considered [36].

Cardiac transplantation is another treatment protocol that has shown good results in general, even though it carries high pre-operative risks. In some boys with severe cardiac dysfunction, left ventricular assist devices have been used to aid them until a heart donor can be found. Using an assist device has major risks including infection caused by neutropenia, and strokes caused by clots forming in the chambers of the heart [4].

Neutropenia is usually treated with subcutaneous granulocyte colony-stimulating factor (G-CSF). The dose and frequency of the G-CSF injection varies depending on the severity of neutropenia, drug responses, and infections. The goal of using G-CSF is to increase the average count of neutrophils rather than cure neutropenia or normalize the neutrophil count. This treatment approach has resulted in noticeable improvements, as it reduces bacterial infections, lethargy, and mouth ulcers [4]. Neutropenia can also be managed with prophylactic antibiotics along with the G-CSF injections, which lower the risk of serious infections [64].

Many promising experimental therapeutic strategies to treat or even cure Barth syndrome are in progress, including lipid replacement therapy, which is the use of oral supplements containing cellular phospholipids and antioxidants to treat various lipid deficiencies and syndromes [65]. These oral supplements are protected against oxidative damage during storage, ingestion, digestion, and absorption by the introduction of antioxidants, and they are protected from chemical enzymatic activity and bile by using protective molecules to bind to phospholipid micelles non-covalently [36, 66, 67]. Elamipretide, also known as Bendavia [68], is a synthetic lipophilic tetrapeptide experimental drug with the potential to treat Barth Syndrome. Elamipretide has the ability to penetrate cellular and mitochondrial membranes by diffusion where it gets associated with ionic phospholipids, especially cardiolipin in the mtIM. This peptide-lipid interaction stabilizes ETS complexes and results in increased ATP synthesis [69]. There are only a few clinical trials to test the efficacy and tolerability of elamipretide. The initial results are promising, as they showed actual improvement in ATP synthesis and positive effects on the left ventricular volumes [70]. However, further studies and tests are required to ensure the safety of this product on the long term. Moreover, *TAZ* gene replacement therapy, mitochondria-targeted antioxidants, induced pluripotent stem cells [7] have been used as possible treatment strategies.

In addition to the pharmacological and surgical treatment of the disease, a team of different specialists consisting of psychologists, speech and language therapists, educational support workers, as well as others, are needed for achieving a top-level management of the disease [1].

6. Conclusions and Future Directions

Barth syndrome is a rare X-linked disease where the *TAZ* gene is mutated rendering the protein product, Tafazzin, nonfunctional. Tafazzin is responsible for the CL remodeling, specific to the mtIM. CL was found to be associated with different mitochondrial proteins, especially those involved in oxidative phosphorylation and electron transfer pathway complexes. CL stabilizes these complexes and proteins which enhances ATP production and maintains the whole mitochondrial membrane. Barth syndrome patients struggle from cardiomyopathy, myopathy, neutropenia, and other symptoms as a result of this mutation. Currently a known cure or a complete treatment for Barth syndrome is lacking. However, multiple strides have been made in disease management using varying techniques and treatment plans. Clinical studies and basic mitochondrial research are ongoing to find a way to cure Barth syndrome using novel drugs, gene therapy, lipid replacement therapy, and others.

Abbreviations

3-MGA	3-methylglutaconic acid	L ₄ -CL	tetra linoleoyl CL
BTHS	Barth syndrome	LPC	lysophosphatidylcholine
CDP-DAG	cytidine diphosphate-diacylglycerol	LPE	lysophosphatidylethanolamine
CLS	CL synthase	MLCL	monolyso-CL
CDS	CDP-DAG synthase	PA	phosphatidic acid
CL	Cardiolipin	PC	phosphatidylcholine
DLCL	dilyso-CL	PE	phosphatidylethanolamine
ETS	electron transfer system	PGP	phosphatidylglycerol phosphate
FFA	free fatty acid	PFPP	phosphatidylglycerol phosphate phosphatase
Gp	glycerol 3-phosphate	PFPS	phosphatidylglycerol phosphate synthase
G-CSF	granulocyte colony-stimulating factor	PLA ₂	phospholipase A ₂
mtIM	mitochondrial inner membrane	TAZ	Tafazzin gene

References

1. Garlid, A.O., Schaffer, C.T., Kim, J., Bhatt, H., Guevara-Gonzalez, V., and Ping, P. (2020). TAZ encodes tafazzin, a transacylase essential for cardiolipin formation and central to the etiology of Barth syndrome. *Gene* 726, 144148.
2. Barth, P.G., Scholte, H.R., Berden, J.A., Van der Klei-Van Moorsel, J.M., Luyt-Houwen, I.E., Van 't Veer-Korthof, E.T., Van der Harten, J.J., and Sobotka-Plojhar, M.A. (1983). An X-linked mitochondrial disease affecting cardiac muscle, skeletal muscle and neutrophil leucocytes. *J Neurol Sci* 62, 327-355.
3. Kelley, R.I., Cheatham, J.P., Clark, B.J., Nigro, M.A., Powell, B.R., Sherwood, G.W., Sladky, J.T., and Swisher, W.P. (1991). X-linked dilated cardiomyopathy with neutropenia, growth retardation, and 3-methylglutaconic aciduria. *J Pediatr* 119, 738-747.
4. Clarke, S.L., Bowron, A., Gonzalez, I.L., Groves, S.J., Newbury-Ecob, R., Clayton, N., Martin, R.P., Tsai-Goodman, B., Garratt, V., Ashworth, M., et al. (2013). Barth syndrome. *Orphanet J Rare Dis* 8, 23.
5. Neustein, H.B., Lurie, P.R., Dahms, B., and Takahashi, M. (1979). An X-linked recessive cardiomyopathy with abnormal mitochondria. *Pediatrics* 64, 24-29.

6. Byeon, S.K., Ramarajan, M.G., Madugundu, A.K., Oglesbee, D., Vernon, H.J., and Pandey, A. (2021). High-resolution mass spectrometric analysis of cardiolipin profiles in Barth syndrome. *Mitochondrion* 60, 27-32.
7. Bione, S., D'Adamo, P., Maestrini, E., Gedeon, A.K., Bolhuis, P.A., and Toniolo, D. (1996). A novel X-linked gene, G4.5. is responsible for Barth syndrome. *Nat Genet* 12, 385-389.
8. Jefferies, J.L. (2013). Barth syndrome. *Am J Med Genet C Semin Med Genet* 163C, 198-205.
9. Xu, Y., Zhang, S., Malhotra, A., Edelman-Novemsky, I., Ma, J., Kruppa, A., Cernicica, C., Blais, S., Neubert, T.A., Ren, M., et al. (2009). Characterization of tafazzin splice variants from humans and fruit flies. *J Biol Chem* 284, 29230-29239.
10. Human Tafazzin (TAZ) Gene Variants Database. (Barth Syndrome Foundation). Available online: <https://www.barthsyndrome.org/research/taffazindatabase.html> (accessed 2020)
11. Neuwald, A.F. (1997). Barth syndrome may be due to an acyltransferase deficiency. *Curr Biol* 7, R465-466.
12. Xu, Y., Malhotra, A., Ren, M., and Schlame, M. (2006). The enzymatic function of tafazzin. *J Biol Chem* 281, 39217-39224.
13. Rappocciolo, E., and Stiban, J. (2019). Prokaryotic and Mitochondrial Lipids: A Survey of Evolutionary Origins. *Adv Exp Med Biol* 1159, 5-31.
14. Mahajan, M., Bharambe, N., Shang, Y., Lu, B., Mandal, A., Madan Mohan, P., Wang, R., Boatz, J.C., Manuel Martinez Galvez, J., Shnyrova, A.V., et al. (2021). NMR identification of a conserved Drp1 cardiolipin-binding motif essential for stress-induced mitochondrial fission. *Proc Natl Acad Sci U S A* 118.
15. Yang, Z., Wang, L., Yang, C., Pu, S., Guo, Z., Wu, Q., Zhou, Z., and Zhao, H. (2021). Mitochondrial Membrane Remodeling. *Front Bioeng Biotechnol* 9, 786806.
16. Ge, Y., Boopathy, S., Nguyen, T.H., Lugo, C.M., and Chao, L.H. (2021). Absence of Cardiolipin From the Outer Leaflet of a Mitochondrial Inner Membrane Mimic Restricts Opa1-Mediated Fusion. *Front Mol Biosci* 8, 769135.
17. Gianni, M., Goracci, L., Schlaefli, A., Di Veroli, A., Kurosaki, M., Guarrera, L., Bolis, M., Foglia, M., Lupi, M., Tschan, M.P., et al. (2022). Role of cardiolipins, mitochondria, and autophagy in the differentiation process activated by all-trans retinoic acid in acute promyelocytic leukemia. *Cell Death Dis* 13, 30.
18. Petit, P.X., Ardilla-Osorio, H., Penalvia, L., and Rainey, N.E. (2020). Tafazzin Mutation Affecting Cardiolipin Leads to Increased Mitochondrial Superoxide Anions and Mitophagy Inhibition in Barth Syndrome. *Cells* 9.
19. Gonzalez, F., D'Aurelio, M., Boutant, M., Moustapha, A., Puech, J.P., Landes, T., Arnaune-Pelloquin, L., Vial, G., Taleux, N., Slomianny, C., et al. (2013). Barth syndrome: cellular compensation of mitochondrial dysfunction and apoptosis inhibition due to changes in cardiolipin remodeling linked to tafazzin (TAZ) gene mutation. *Biochim Biophys Acta* 1832, 1194-1206.
20. So, M., Stiban, J., Ciesielski, G.L., Hovde, S.L., and Kaguni, L.S. (2021). Implications of Membrane Binding by the Fe-S Cluster-Containing N-Terminal Domain in the Drosophila Mitochondrial Replicative DNA Helicase. *Front Genet* 12, 790521.
21. Ghosh, S., Zulkifli, M., Joshi, A., Venkatesan, M., Cristel, A., Vishnu, N., Madesh, M., and Gohil, V.M. (2021). MCU-complex-mediated mitochondrial calcium signaling is impaired in Barth syndrome. *Hum Mol Genet*.
22. Mejia, E.M., Zegallai, H.M., Sparagna, G.C., and Hatch, G.M. (2021). Reduced protein kinase C delta association with a higher molecular weight complex in mitochondria of Barth Syndrome lymphoblasts. *bioRxiv*.
23. Zegallai, H.M., Abu-El-Rub, E., Cole, L.K., Field, J., Mejia, E.M., Gordon, J.W., Marshall, A.J., and Hatch, G.M. (2021). Tafazzin deficiency impairs mitochondrial metabolism and function of lipopolysaccharide activated B lymphocytes in mice. *FASEB J* 35, e22023.
24. Xu, Y., Erdjument-Bromage, H., Phoon, C.K.L., Neubert, T.A., Ren, M., and Schlame, M. (2021). Cardiolipin remodeling enables protein crowding in the inner mitochondrial membrane. *EMBO J* 40, e108428.
25. Koshkin, V., and Greenberg, M.L. (2000). Oxidative phosphorylation in cardiolipin-lacking yeast mitochondria. *Biochem J* 347 Pt 3, 687-691.
26. Saric, A., Andreau, K., Armand, A.S., Moller, I.M., and Petit, P.X. (2015). Barth Syndrome: From Mitochondrial Dysfunctions Associated with Aberrant Production of Reactive Oxygen Species to Pluripotent Stem Cell Studies. *Front Genet* 6, 359.

27. Dudek, J. (2017). Role of Cardiolipin in Mitochondrial Signaling Pathways. *Frontiers in Cell and Developmental Biology* 5.
28. Mancuso, D.J., Sims, H.F., Han, X., Jenkins, C.M., Guan, S.P., Yang, K., Moon, S.H., Pietka, T., Abumrad, N.A., Schlesinger, P.H., et al. (2007). Genetic ablation of calcium-independent phospholipase A2gamma leads to alterations in mitochondrial lipid metabolism and function resulting in a deficient mitochondrial bioenergetic phenotype. *J Biol Chem* 282, 34611-34622.
29. Malhotra, A., Edelman-Novemsky, I., Xu, Y., Plesken, H., Ma, J., Schlame, M., and Ren, M. (2009). Role of calcium-independent phospholipase A2 in the pathogenesis of Barth syndrome. *Proceedings of the National Academy of Sciences* 106, 2337-2341.
30. Houtkooper, R.H., Rodenburg, R.J., Thiels, C., van Lenthe, H., Stet, F., Poll-The, B.T., Stone, J.E., Steward, C.G., Wanders, R.J., and Smeitink, J. (2009). Cardiolipin and monolysocardiolipin analysis in fibroblasts, lymphocytes, and tissues using high-performance liquid chromatography–mass spectrometry as a diagnostic test for Barth syndrome. *Analytical biochemistry* 387, 230-237.
31. Bissler, J.J., Tsoras, M., Göring, H.H., Hug, P., Chuck, G., Tombragel, E., McGraw, C., Schlotman, J., Ralston, M.A., and Hug, G. (2002). Infantile dilated X-linked cardiomyopathy, G4. 5 mutations, altered lipids, and ultrastructural malformations of mitochondria in heart, liver, and skeletal muscle. *Laboratory investigation* 82, 335-344.
32. Li, J., Romestaing, C., Han, X., Li, Y., Hao, X., Wu, Y., Sun, C., Liu, X., Jefferson, L.S., and Xiong, J. (2010). Cardiolipin remodeling by ALCAT1 links oxidative stress and mitochondrial dysfunction to obesity. *Cell metabolism* 12, 154-165.
33. Lu, Y.-W., Galbraith, L., Herndon, J.D., Lu, Y.-L., Pras-Raves, M., Vervaart, M., Van Kampen, A., Luyf, A., Koehler, C.M., and McCaffery, J.M. (2016). Defining functional classes of Barth syndrome mutation in humans. *Human molecular genetics* 25, 1754-1770.
34. Sabbah, H.N. (2021). Elamipretide for Barth syndrome cardiomyopathy: gradual rebuilding of a failed power grid. *Heart Fail Rev*.
35. Sabbah, H.N. (2021). Barth syndrome cardiomyopathy: targeting the mitochondria with elamipretide. *Heart Fail Rev* 26, 237-253.
36. Zegallai, H.M., and Hatch, G.M. (2021). Barth syndrome: cardiolipin, cellular pathophysiology, management, and novel therapeutic targets. *Mol Cell Biochem* 476, 1605-1629.
37. Ohtsuka, T., Nishijima, M., Suzuki, K., and Akamatsu, Y. (1993). Mitochondrial dysfunction of a cultured Chinese hamster ovary cell mutant deficient in cardiolipin. *J Biol Chem* 268, 22914-22919.
38. Zhang, M., Mileykovskaya, E., and Dowhan, W. (2002). Gluing the respiratory chain together. Cardiolipin is required for supercomplex formation in the inner mitochondrial membrane. *J Biol Chem* 277, 43553-43556.
39. Paradies, G., Paradies, V., Ruggiero, F.M., and Petrosillo, G. (2019). Role of Cardiolipin in Mitochondrial Function and Dynamics in Health and Disease: Molecular and Pharmacological Aspects. *Cells* 8.
40. Musatov, A., and Robinson, N.C. (2014). Bound cardiolipin is essential for cytochrome c oxidase proton translocation. *Biochimie* 105, 159-164.
41. Lange, C., Nett, J.H., Trumpower, B.L., and Hunte, C. (2001). Specific roles of protein–phospholipid interactions in the yeast cytochrome bc1 complex structure. *The EMBO Journal* 20, 6591-6600.
42. Musatov, A., and Sedlák, E. (2017). Role of cardiolipin in stability of integral membrane proteins. *Biochimie* 142, 102-111.
43. Jiang, F., Ryan, M.T., Schlame, M., Zhao, M., Gu, Z., Klingenberg, M., Pfanner, N., and Greenberg, M.L. (2000). Absence of cardiolipin in the crd1 null mutant results in decreased mitochondrial membrane potential and reduced mitochondrial function. *J Biol Chem* 275, 22387-22394.
44. Chicco, A.J., and Sparagna, G.C. (2007). Role of cardiolipin alterations in mitochondrial dysfunction and disease. *Am J Physiol Cell Physiol* 292, C33-44.
45. Pöyry, S., Cramariuc, O., Postila, P.A., Kaszuba, K., Sarewicz, M., Osyczka, A., Vattulainen, I., and Róg, T. (2013). Atomistic simulations indicate cardiolipin to have an integral role in the structure of the cytochrome bc1 complex. *Biochimica et Biophysica Acta (BBA) - Bioenergetics* 1827, 769-778.
46. Enríquez, J.A. (2016). Supramolecular Organization of Respiratory Complexes. *Annual Review of Physiology* 78, 533-561.
47. Gu, J., Wu, M., Guo, R., Yan, K., Lei, J., Gao, N., and Yang, M. (2016). The architecture of the mammalian respirasome. *Nature* 537, 639-643.
48. Guo, R., Gu, J., Wu, M., and Yang, M. (2016). Amazing structure of respirasome: unveiling the secrets of cell respiration. *Protein Cell* 7, 854-865.

49. Wu, M., Gu, J., Zong, S., Guo, R., Liu, T., and Yang, M. (2020). Research journey of respirasome. *Protein Cell* *11*, 318-338.
50. Genova, M.L., and Lenaz, G. (2014). Functional role of mitochondrial respiratory supercomplexes. *Biochimica et Biophysica Acta (BBA) - Bioenergetics* *1837*, 427-443.
51. Letts, J.A., and Sazanov, L.A. (2017). Clarifying the supercomplex: the higher-order organization of the mitochondrial electron transport chain. *Nature structural & molecular biology* *24*, 800-808.
52. Schägger, H., and Pfeiffer, K. (2000). Supercomplexes in the respiratory chains of yeast and mammalian mitochondria. *Embo j* *19*, 1777-1783.
53. Claypool, S.M. (2009). Cardiolipin, a critical determinant of mitochondrial carrier protein assembly and function. *Biochim Biophys Acta* *1788*, 2059-2068.
54. Bazan, S., Mileykovskaya, E., Mallampalli, V.K., Heacock, P., Sparagna, G.C., and Dowhan, W. (2013). Cardiolipin-dependent reconstitution of respiratory supercomplexes from purified *Saccharomyces cerevisiae* complexes III and IV. *J Biol Chem* *288*, 401-411.
55. Mileykovskaya, E., and Dowhan, W. (2014). Cardiolipin-dependent formation of mitochondrial respiratory supercomplexes. *Chem Phys Lipids* *179*, 42-48.
56. Acehan, D., Malhotra, A., Xu, Y., Ren, M., Stokes, D.L., and Schlame, M. (2011). Cardiolipin affects the supramolecular organization of ATP synthase in mitochondria. *Biophys J* *100*, 2184-2192.
57. Paradies, G., Paradies, V., De Benedictis, V., Ruggiero, F.M., and Petrosillo, G. (2014). Functional role of cardiolipin in mitochondrial bioenergetics. *Biochimica et Biophysica Acta (BBA) - Bioenergetics* *1837*, 408-417.
58. Cole, L.K., Mejia, E.M., Sparagna, G.C., Vandell, M., Xiang, B., Han, X., Dedousis, N., Kaufman, B.A., Dolinsky, V.W., and Hatch, G.M. (2020). Cardiolipin deficiency elevates susceptibility to a lipotoxic hypertrophic cardiomyopathy. *J Mol Cell Cardiol* *144*, 24-34.
59. Fiedorczuk, K., Letts, J.A., Degliesposti, G., Kaszuba, K., Skehel, M., and Sazanov, L.A. (2016). Atomic structure of the entire mammalian mitochondrial complex I. *Nature* *538*, 406-410.
60. Yankovskaya, V., Horsefield, R., Törnroth, S., Luna-Chavez, C., Miyoshi, H., Léger, C., Byrne, B., Cecchini, G., and Iwata, S. (2003). Architecture of succinate dehydrogenase and reactive oxygen species generation. *Science* *299*, 700-704.
61. Hunte, C., Koepke, J., Lange, C., Roßmanith, T., and Michel, H. (2000). Structure at 2.3 Å resolution of the cytochrome bc₁ complex from the yeast *Saccharomyces cerevisiae* co-crystallized with an antibody Fv fragment. *Structure* *8*, 669-684.
62. Shinzawa-Itōh, K., Aoyama, H., Muramoto, K., Terada, H., Kurauchi, T., Tadehara, Y., Yamasaki, A., Sugimura, T., Kurono, S., Tsujimoto, K., et al. (2007). Structures and physiological roles of 13 integral lipids of bovine heart cytochrome c oxidase. *The EMBO Journal* *26*, 1713-1725.
63. Finsterer, J. (2019). Barth syndrome: mechanisms and management. *Appl Clin Genet* *12*, 95-106.
64. Steward, C.G., Groves, S.J., Taylor, C.T., Maisenbacher, M.K., Versluys, B., Newbury-Ecob, R.A., Ozsahin, H., Damin, M.K., Bowen, V.M., McCurdy, K.R., et al. (2019). Neutropenia in Barth syndrome: characteristics, risks, and management. *Curr Opin Hematol* *26*, 6-15.
65. Torres, M., Parets, S., Fernández-Díaz, J., Beteta-Göbel, R., Rodríguez-Lorca, R., Román, R., Lladó, V., Rosselló, C.A., Fernández-García, P., and Escribá, P.V. (2021). Lipids in Pathophysiology and Development of the Membrane Lipid Therapy: New Bioactive Lipids. *Membranes (Basel)* *11*, 919.
66. Nicolson, G.L., and Ellithorpe, R. (2006). Lipid Replacement and Antioxidant Nutritional Therapy for Restoring Mitochondrial Function and Reducing Fatigue in Chronic Fatigue Syndrome and Other Fatiguing Illnesses. *Journal of Chronic Fatigue Syndrome* *13*, 57-68.
67. Nicolson, G.L., and Ash, M.E. (2014). Lipid Replacement Therapy: a natural medicine approach to replacing damaged lipids in cellular membranes and organelles and restoring function. *Biochim Biophys Acta* *1838*, 1657-1679.
68. Saad, A., Herrmann, S.M.S., Eirin, A., Ferguson, C.M., Glockner, J.F., Bjarnason, H., McKusick, M.A., Misra, S., Lerman, L.O., and Textor, S.C. (2017). Phase 2a Clinical Trial of Mitochondrial Protection (Elamipretide) During Stent Revascularization in Patients With Atherosclerotic Renal Artery Stenosis. *Circ Cardiovasc Interv* *10*, e005487.
69. Michael Seganish, W., Lynch, J.J., and Sorota, S. (2017). 7.17 - Treatments for Heart Failure. In *Comprehensive Medicinal Chemistry III*, S. Chackalamannil, D. Rotella and S.E. Ward, eds. (Oxford: Elsevier), pp. 628-662.
70. Daubert, M.A., Yow, E., Dunn, G., Marchev, S., Barnhart, H., Douglas, P.S., O'Connor, C., Goldstein, S., Udelson, J.E., and Sabbah, H.N. (2017). Novel Mitochondria-Targeting Peptide in Heart Failure Treatment. *Circulation: Heart Failure* *10*, e004389.

Copyright: © 2022 The authors. This is an Open Access preprint (not peer-reviewed) distributed under the terms of the Creative Commons Attribution License, which permits unrestricted use, distribution, and reproduction in any medium, provided the original authors and source are credited. © remains with the authors, who have granted MitoFit Preprints an Open Access publication license in perpetuity.

